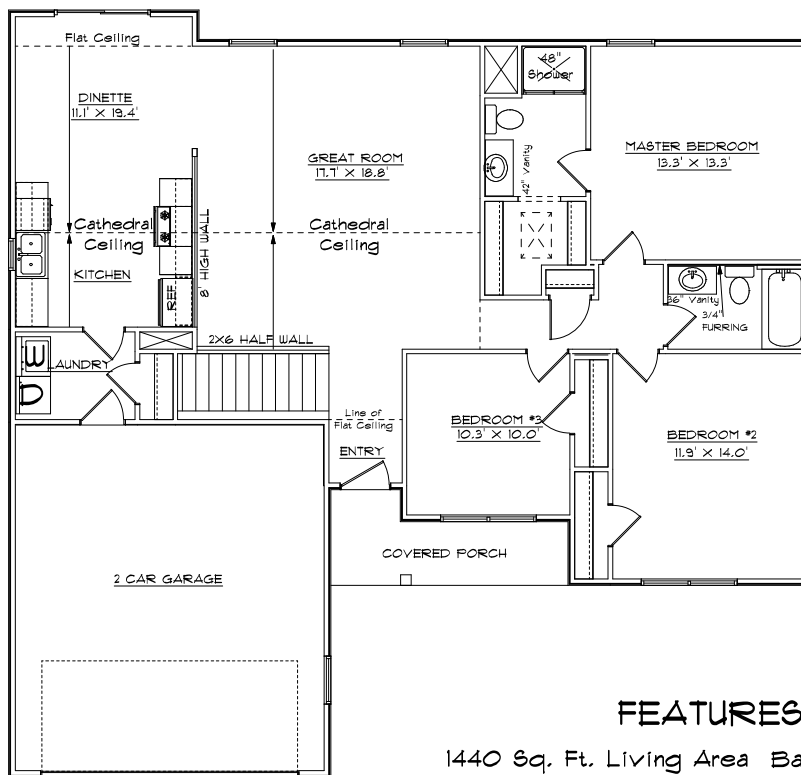


CONTRY HOMES

THE 1440 C GREATROOM



FEATURES:

- 1440 Sq. Ft. Living Area
- Bay in Kitchen
- Range and Dishwasher
- Birch Cabinets & Vanities
- Energy Efficient
- Attached 2 Car Garage
- Greatroom w/ Cathedral Ceiling
- Finished Flooring
- 3 Bedroom
- Main Floor Laundry
- 2 Baths

JOE CONTARINO
 Broker Associate
 Dickerson & Nieman-Realtors
 Office (815) 399-8100
 Email: info@contryhomes.com
 Web: www.contryhomes.com

* All Dimensions are Approximate *

* Note: All elevations are representative only and subject to change without notice. Consult a Contry Homes representative for details.

January 07, 2010